

PROTECTION  
FOR THE UNEXPECTED



**Floodproofing**.com<sup>®</sup>

Flood Barriers | Floodproof Windows | Flood Vents



# Table of Contents

WHAT ARE YOU LOOKING FOR?

## SERVICES & RESOURCES

---

- Flood Design Team [4](#)
- Project Financing [6](#)
- Product Installation [7](#)
- Professional Education [8](#)
- Flood Insurance Review [9](#)

## DEPLOYABLE FLOOD SYSTEMS

---

- Flood Logs [10](#)
- Custom Flood Panels [12](#)
- Flood Planks [14](#)
- Expandable Flood Barrier [16](#)

## PASSIVE FLOOD SYSTEMS

---

- Horizontal Lifting Automatic Barrier [18](#)
- Vertical Lifting Automatic Barrier [20](#)
- Floodproof Windows [22](#)
- Glass Flood Walls [24](#)

## POINT-OF-USE FLOOD SYSTEMS

---

- Commercial Flood Doors [26](#)
- Commercial Flood Gates [28](#)
- Industrial Flood Gates and Doors [30](#)
- Watertight Hatches [32](#)
- Roller Curtain Flood Doors [34](#)

## PERIMETER FLOOD SYSTEMS

---

- Modular Perimeter Flood Barrier [34](#)
- Standard Water-Filled Interlocking Barrier [38](#)
- Water-Filled Tube Flood Barrier [40](#)
- Semi Water-Filled Interlocking Flood Barrier [42](#)
- Trapezoidal Sand-Filled Flood Barrier - Long [44](#)
- Trapezoidal Sand-Filled Flood Barrier - Short [46](#)

## FLOOD PUMPS

---

- Dri-Prime Pumps [48](#)
- Submersible Pumps [49](#)
- Wet-Prime Pumps [49](#)

## FLOOD VENTS

---

- Flood Vents [50](#)
- Multi-Frames [52](#)
- Accessories [53](#)



# Floodproofing Design & Turnkey Supply Services

ABOUT FLOODPROOFING.COM

**We provide flood protection products, education, & support that follow all of the latest regulations.**

---



We sell wet & dry solutions designed to meet the needs of residential & commercial projects.



From pre-bid planning & pricing, to expert product selection & supplying authorized installers, we ensure jobs are done right.



We help you navigate various floodplain codes & regulations to ensure design compliance.

**1 (800) 507 0865 | [info@floodproofing.com](mailto:info@floodproofing.com)**

# The Flood Design Team

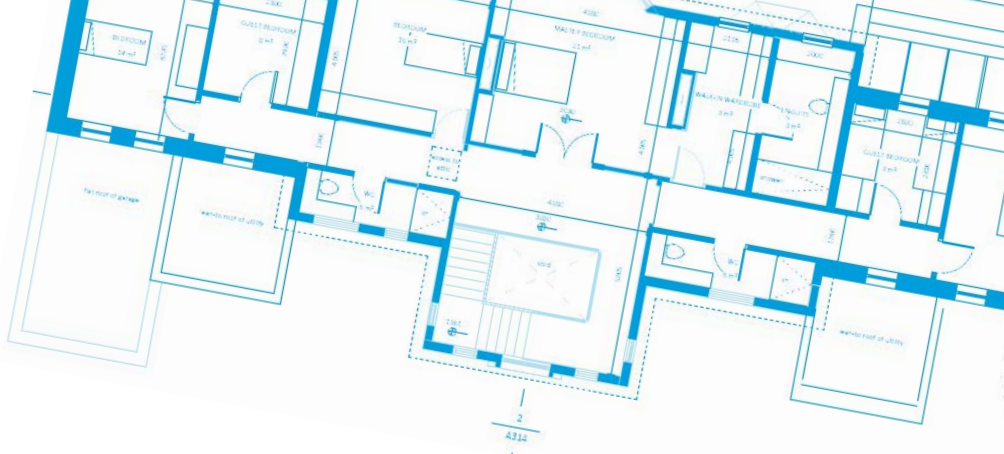
STREAMLINING THE PROJECT PROCESS

**Our in-house team of Certified Floodplain Managers and Engineers have decades of experience and can help you navigate the complex codes and standards associated with building in a floodplain.**

We'll analyze your unique project, taking the time to review your budget and find the perfect solution from our portfolio of floodproofing products. Our design analysis contains custom 3-part specifications, product recommendations, take-offs and schedules giving you everything you need to know to move forward with your project. We help you improve timelines by alleviating the complicated issues that arise, avoiding the bottleneck caused by adding flood protection to your design later in the game. This entire service is provided complimentary so you can focus on other aspects of your design, knowing a knowledgeable, experienced team handled your floodproofing needs from start to finish.



# FLOOD DESIGN TEAM



## WHAT'S INCLUDED IN YOUR Design Analysis



The Best Solutions  
For Your Project



Federal, State &  
Local Code Help



Custom 3-Part  
Specifications



Transparent Timelines  
& Deliverables

## EASILY COMPARE

# Features, Storage & Deployment

Send us your project plans, & we'll provide a free, in-depth analysis with guidance on the best floodproofing solutions for your commercial or residential project.



### SAVE TIME

So you can focus  
on other tasks

### STAY ON BUDGET

No surprises or budget  
concerns

### PEACE OF MIND

Knowing the job will  
meet building codes

### SMOOTH PROCESS

No design hold ups  
or bottlenecks

## Send Your Plans

[floodproofing.com/plans](https://floodproofing.com/plans) or [plans@floodproofing.com](mailto:plans@floodproofing.com)



# Fast, Flexible Financing

MANAGABLE PROJECT PAYMENT PLANS

**We make flood protection more accessible by offering simple payment plans for your flood protection projects.**

We've partnered with Ascentium Capital & MoreHouse Finance, making flood protection more accessible. Our new financing options make funding commercial & residential flood mitigation products easier with a convenient process.



**Fill Out The Application**



**Receive A Quick Decision**



**Review & Sign Documents**

## COMMERCIAL

Financing up to \$2 million  
Quick application for loans up to \$250,000  
\$0 down & low introductory payment options  
Fast decisions & broad terms

## RESIDENTIAL

No prepayment penalty  
Unsecured loans  
\$1,000 - \$65,000  
FDIC Backed

## Request A Quote

[financing@floodproofing.com](mailto:financing@floodproofing.com)

# Product Installation

A TURNKEY SOLUTION FOR YOUR PROJECT

**We'll provide an experienced team of experts who can handle the installation of your flood protection products.**

---

Our partners are experienced & trained on all wet and dry floodproofing products in our catalog. They understand the complex codes & standards associated with properly installing flood mitigation solutions and will ensure your flood protection system works as intended..

In-depth knowledge of passive systems, flood barriers & flood windows



**Save Time & Costs**  
Focus on other aspects



**Guidance of**  
codes & standards



**Reduced Risk**  
with proper installations

WORK WITH US [install@floodproofing.com](mailto:install@floodproofing.com) or [floodproofing.com/install](https://floodproofing.com/install)



# Professional Education

LUNCH & LEARNS OR WEBINARS

**We have multiple floodplain design courses that can be taken online or given in person.**

We've spent many years studying the science of flood mitigation and the effects of flood waters on a poorly protected structures. We instruct and educate Architects, Builders, Certified Floodplain Managers, Code Officials, Engineers, Insurance Agents, Realtors, and Surveyors.

**SCHEDULE A LUNCH & LEARN OR WEBINAR** [ceu@floodproofing.com](mailto:ceu@floodproofing.com)

## Topics We Cover

- Floods and potential hazards to buildings
- FEMA, NFIP, ASCE, ICC, and Building Codes
- Differences between wet & dry floodproofing
- Differences in engineered & non-engineered openings
- Active vs. passive solutions & impact of ownership
- The role of building compliance in flood insurance rates



# Complementary Flood Insurance Review

RECEIVE THE LOWEST POSSIBLE PREMIUM

Ensure you're taking advantage of the possible credits and discounts available for your structure.

After our floodproofing assessment helps ensure structures properly protected, our in-house insurance agency, **Risk Reduction Plus Group** (RRPG) can also provide a flood insurance quote, with many options to choose from. With 20+ years of flood risk and damage prevention experience, they can make sure the lowest possible flood insurance premium is achieved.



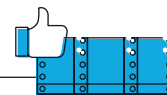
## Proper Venting Discount

Flood risk can be reduced by installing flood vents that prevent foundation damage which can lead to flood insurance discounts.



## Correct Rating

There are many nuances to flood insurance. We can make sure projects or properties are rated correctly & receiving the lowest premium possible.



## Dry Floodproofing Credit

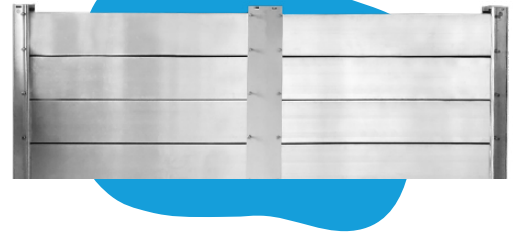
It can be difficult to get approved for dry floodproofing credit. Our specialists can help ensure maximum flood insurance savings with the proper credits.

FLOOD INSURANCE QUESTIONS?  
insurance@floodproofing.com or 1 (800) 507 0865



# Flood Logs

FLOOD PANEL



**A customizable, stackable aluminum flood barrier that is a time-tested solution for flood prone locations.**

The Flood Log system is designed to be resistant to impact forces & withstand high-velocity water loads. Ideal for uses where higher protection is needed. Meets ASCE & FEMA requirements.

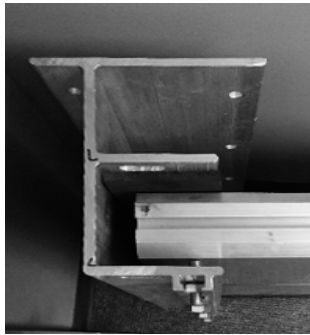


### Applications

Storefronts | Select Windows | Doors | Vehicle Access Points



Emergency egress stairs



Offset Bracket Gives Wall Clearance



Flood log storage

## FEATURES MADE IN THE USA



### User Friendly

Color Coded For Guided Assembly



### Durable

Aluminum Support Posts & Beams To Anchor Systems



### Versatile

Engineered to Accommodate Slopes of 20°



### Custom Sizes

Dimensions to Fit Your Needs



### Storage Solutions

Custom Rack Configurations Available

## STACKABLE "C" POSTS

Flood Logs are strengthened by stackable "C" shaped posts & hollow aluminum beams fitted with watertight rubber seals, ensuring maximum stability & flood protection. Each support post can easily be removed, minimizing aesthetic impact to any building.



## MOUNTING OPTIONS JAM | OFFSET | FLUSH



### DIMENSIONS

Customizable

### MATERIAL

Aluminum Log Panels, Compression Gaskets

### IMPACT RESISTANT

Yes

# Custom Flood Panels

FLOOD PANEL



**A solid, customizable flood barrier for single or double-door applications that can be designed for any site conditions.**

The Flood Panel is an aluminum removable flood barrier that is engineered to withstand hurricane forces and floodwater impact. Each panel is custom designed to fit the full Design Flood Elevation and is edged with a neoprene gasket.



## Applications

Storefronts | Select Windows | Doors | Vehicle Access Points



The panels attach to the floor and sides of the building opening using hex bolts that fasten to either pre-installed anchors or mounting plates. Panels can be fabricated in any size and configuration with design heights varying from 12" to over 7'.



Can be used in conjunction with Flood Logs in areas where long arrays are required and the ground condition changes in elevation. Panels with a span greater than 4' can be supported by a 45-degree brace or a mid-span support post. Mounting plates can allow for more rapid deployment are available in primed steel or stainless steel and can be painted to blend in with the building color.

## CONFIGURATION OPTIONS



Vertical seam and support kickers



Horizontal seams



Custom support columns

## Technical Specifications

<b>MATERIAL</b>	Aluminum sheet skin fastened over an aluminum tube frame
<b>SEAL</b>	Neoprene and rubber composite gasket
<b>HARDWARE</b>	304 Galvanized Stainless Steel Anchor Bolts

## FEATURES MADE IN THE USA



### User Friendly

One size fastening bolt for all mounting locations



### Durable

45° Braces Or Mid-Span Support Posts



### Mounting Options

Pre-Installed Anchors Or Mounting Plates



### Custom Sizes

Dimensions To Fit Your Needs



### Versatile

Conforms To Sloped Ground



# Flood Planks

INVISIBLE FLOOD CONTROL WALL™



## Removable aluminum flood wall custom-engineered for larger applications and higher protection.

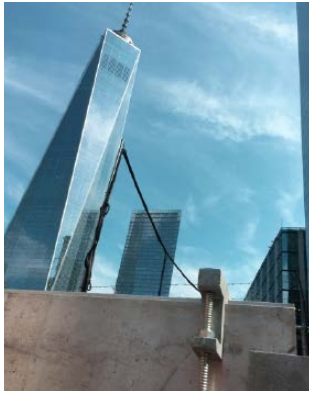
The IFCW system is composed of gasketed aluminum planks and steel posts which are quickly mountable and watertight. It is erected when flooding is imminent and then easily disassembled and stored, leaving an unobstructed view of the area with no protrusions.



*IFCW Perimeter System*

### Applications

Airports | Museums | Riverfronts | Schools | Urban Buildings | Manufacturing Facilities



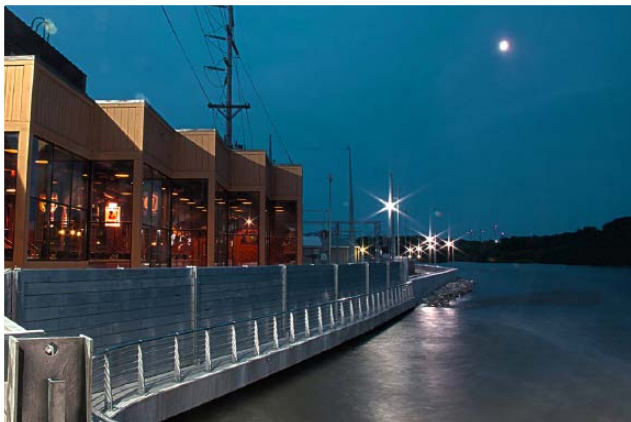
One World Trade Center



Corner Post Installation

The IFCW has extruded aluminum planks that simply stack between the steel supports with a gasket on the “dry” side. During a flood event, the planks fill with water, adding strength and load capacity to the whole system while helping to protect against impact loads.

The IFCW is manufactured and sourced in the United States and has been analyzed and accepted for use by the United States Army Corps of Engineers, and is in use on hundreds of installations across the USA and Canada.



Riverfront Application



Angle Braces

Due to its stackable design, the IFCW can be deployed in multi-height increments depending on the situation. If the property is expecting minimal flooding or facing time constraints, a lower-height wall could be installed for that instance.



**Largest Removable Flood Wall Installation in USA**

Holman Field, St. Paul Downtown Airport



Deployment In Progress

**FEATURES**  
MADE IN THE USA



**Higher Protection**

Intermediate Support Design. Heights of 20'+ Possible



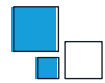
**Durable**

Support Posts Anchored To Reinforced Foundation



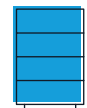
**Discreet**

Base Plates Minimally Visible. No Protrusions



**Customization**

Custom Corner Angles. Jogs, Step-Ups, Multi-Heights & Lengths



**Storage Solutions**

Minimal Storage Space. Optional Pallet & Containers Available.

**MATERIAL**

Galvanized Steel Posts, Aluminum Planks

**PLANK WEIGHT**

5.5lb/ft

**PLANK LENGTH**

Typical 20'

**SYSTEM HEIGHT**

Up to 20' or More

# Expandable Flood Barrier

DAM EASY®



**A ready-to-use flood barrier for doors & entryways that can easily be installed in under 5 minutes.**

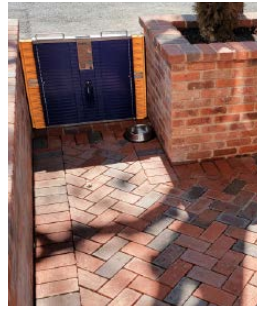
There's no need for damaging hardware, adhesives or permanent fixtures when using Dam Easy—simply place between an entryway, extend the sides to fit the opening, and inflate the built-in tube. This simple solution replaces the time, energy, and mess associated with sandbags and can be installed in under 5 minutes.



## Applications

Residential & Commercial Doorways | Garages | Patio Doors





**FEATURES**  
MADE IN IRELAND



**Convenient**  
Deploys in Under  
5 Minutes

HEIGHT	PROTECTION HEIGHT	DEPTH	WEIGHT
29.5"	28.34"	2.5"	45 lbs

*Needs 36" of clearance above for pump mechanism*



**Easy To Install**  
No Permanent  
Fixtures



**Standardized**  
Fits Most  
Regular Openings

**Configurations Of Full Size And Mini Barriers Can Accommodate Any Opening**

Extension poles available. Some installation required. A core-drilled hole and anchor rod is required for initial installation and allows for the quick placement & removal of the extension pole. A cap covers the opening when not in use.



**Connectable**  
Extension Poles for  
Wider Openings



**MINI BARRIER**  
20"-26.5"



**STANDARD BARRIER**  
30.7"-43.4"

**EXTENSION POLE  
CONFIGURATIONS**

1 POLE  
**2 BARRIERS**  
64.5"-89.725"

2 POLES  
**3 BARRIERS**  
98.35"-136.15"

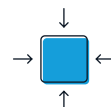
3 POLES  
**4 BARRIERS**  
132.175"-182.575"

4 POLES  
**5 BARRIERS**  
166"-229"

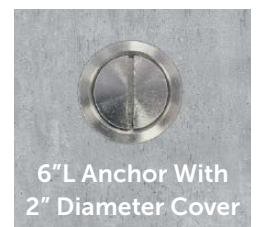


1 MINI + 2 STANDARD  
**SINGLE GARAGE**  
67.65"-119.35"

1 MINI + 4 STANDARD  
**DOUBLE GARAGE**  
155.3"-194.3"



**Compact**  
Minimal Storage  
Needed

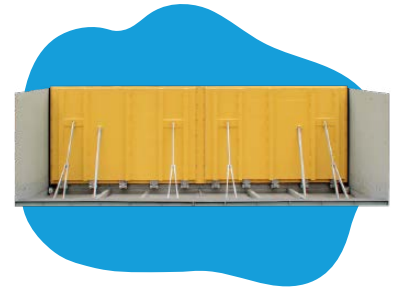


6"L Anchor With  
2" Diameter Cover



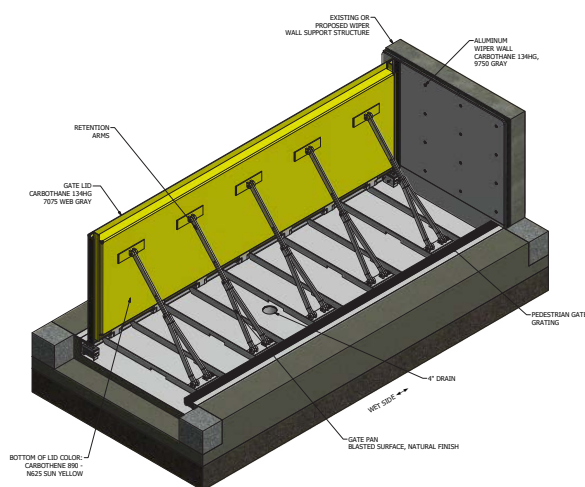
# Horizontal Lifting Automatic Barrier

FLOODBREAK®



**A low-maintenance, self-clearing automatic flood barrier that remains hidden until activated by floodwater.**

With over 2,500 flood barriers installed worldwide, the FloodBreak® flood control system is a passive flood barrier that closes automatically to prevent water entry, activated by rising floodwater. With no reliance on people, power, springs, or mechanical assistance to lift the gate, failure points are eliminated. The systems are low maintenance, self-clearing and don't require any lubrication so they will operate when needed 24/7.



**FEATURES**  
MADE IN THE USA



**Always Ready**

Does Not Need Manual Activation



**Discreet**

Remains Underground At Resting Position



**No Storage Needed**

Remains Hidden Until Activated by Floodwater



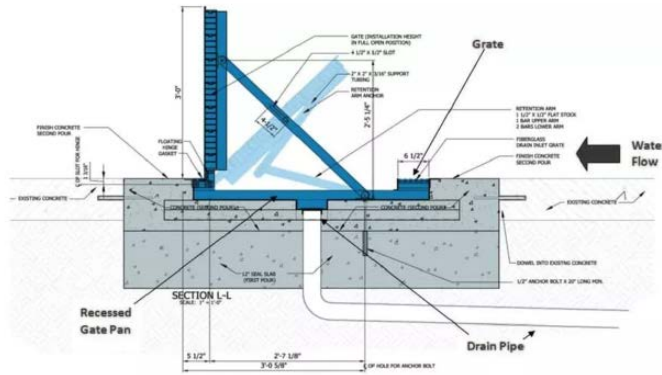
**No Electric**

Operates Without Human Intervention/Electricity



**Durable**

Long Service Life With Minimal Maintenance



The concept is simple—let the water work against itself to automatically float the buoyant aluminum beam and activate the self-sealing rubber gasket. The higher the water rises, the higher the flood barrier is lifted until it reaches full deployment and is held closed by the hydrostatic pressure. When the water recedes, the flood barrier returns to its recessed location in front of the entryway, allowing vehicle and pedestrian passage to resume.



**Technical Specifications**

<b>SIZE</b>	No height or width restrictions
<b>SEALS</b>	Ethylene Propylene Diene Monomer
<b>MATERIAL</b>	Marine Grade Aluminum, Stainless Steel Fittings
<b>ANCHOR</b>	Poured Concrete Slab

**Applications**

Buildings & Garages | Levee & Waterfronts | Flood Walls | Multi-Family | Residential

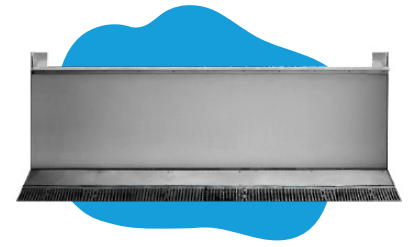


Loudres Hospital, Binghamton, NY



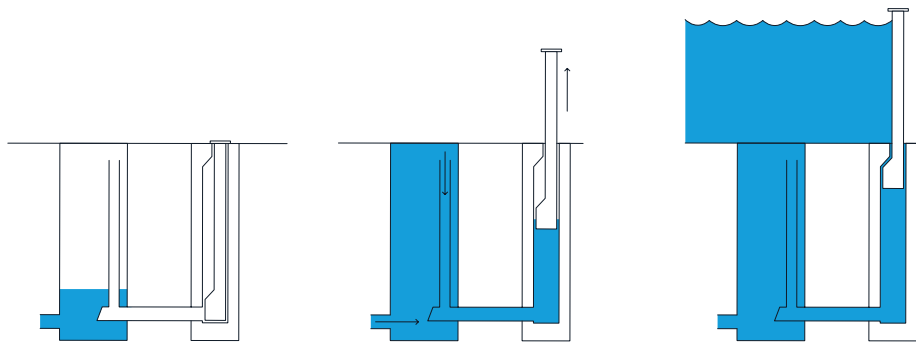
UTMB Primary Care Back Entrance, Galveston, TX

# Vertical Lifting Automatic Barrier



SELF CLOSING FLOOD BARRIER™

A vertically-lifted barrier that utilizes flood water to lift itself into position to seal off an opening during flooding.



**Resting Position**

In non-flood conditions, all operational parts are concealed in an underground basin.

**Deployed Position**

As floodwater rises to a predetermined level, an inlet pipe fills the basin, making the flood wall float up.

**Fully Deployed**

When the basin is full, an angled support block locks the flood wall into position making it watertight.

## HIGH WATER PROTECTION

This flood defense system uses approaching floodwater to raise its barrier, using the problem to create the solution, protecting from heavy rainfall, gales, or rapidly melting snow.



### Always Ready

Does Not Need Manual Activation



### Discreet

Remains Underground At Resting Position

## Applications

Storefronts | Windows/Doors | Access Doors | Entire Perimeter



### No Storage Needed

Remains Hidden Underground Until Triggered

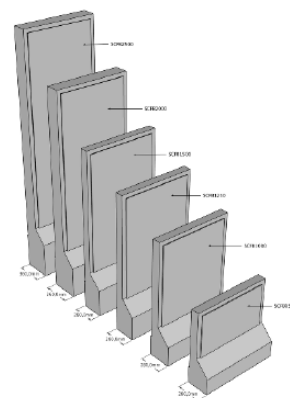


### No Electric

Operates Without Human Intervention Or Electricity

## Technical Specifications

<b>SIZE</b>	Custom
<b>PANELS</b>	PUR foam core & fiberglass outer layer
<b>SEALS</b>	Long-lasting, durable gaskets
<b>BASIN</b>	Poured Concrete or Steel
<b>ACTIVATION</b>	Pipe Connection, Inspection Pit, Inspection Pit with Pump, Water Runnel, or Water Runnel with Quick Fill System.



### User Control

Optional Manual Deployment

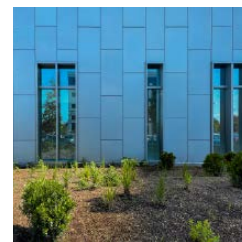
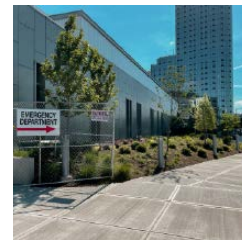


# Floodproof Window Systems

FENEX



**Impact-rated, floodproof windows that provide clarity, beauty, + passive protection at all times.**



Floodproof windows are passive systems that are always ready to protect from rising flood water + debris impact. They are hurricane impact-rated and tested to withstand more than 10' of water + large missile collision. No storage, installation, or deployment needed before a flood event. Multiple framing options available including customizable shaped systems.

**FEATURES**  
MADE IN THE USA



Historical Flood Window Application



**Framing Options**  
Factory-Glazed Configurations



**Custom Configurations**  
Any Shape. Tint & Print Also Available

**Applications**

Oversized Storefront Window Solutions | Commercial & Residential Window Systems



**Energy Efficient**  
Insulated Assembly Options

**Tested To Exceed ANSI/FM 2510 Standards For Impact Up To 1000 lbs**



Impact Test on 4' x 6' Flood Window



Load Test of 9' of water on 20' x 11' Flood Window



**Tested**  
Water & Debris Impact

**Other Fenex Products**



**Oversized & Curved Windows**



**Walkable Skylights**



**Fire & Ballistic Windows**



**FL Product Approval**  
Oversized, Skylights & Fire Windows



Scientific research & testing ensures products conform to highest standards of safety & property loss prevention.

# Glass Flood Walls

FENEX



**A customizable, glass flood wall that provides passive protection along coastal environments without obstructing the view**

---



Glass Flood Barriers are passive systems with a unique design and multiple options. It's always ready to protect from rising flood water and debris impact and requires no installation before a storm. This barrier can be used for hospitality, government, or commercial buildings near any water or flood source.



**FEATURES**  
MADE IN THE USA



**No Storage Needed**

Always Remains  
In Place



**Always Ready**

No Need to Deploy  
Before Flooding



**Enhances The View**

Doesn't interfere with  
walkway or view

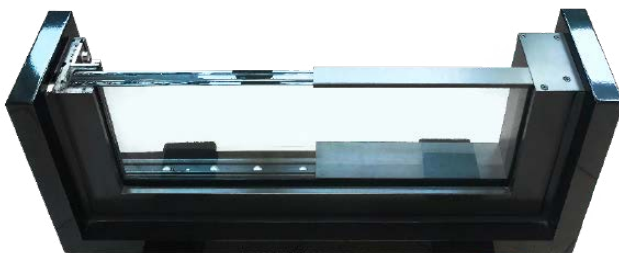


**Custom Configurations**

Oversized panels  
and print options

**Applications**

Bulkhead & Seawalls | Coastal Properties | Hospitality



These flood wall systems can be installed with a variety of frame options and can even be designed for use as a handrail. The system also has a tamper-proof cap that protects the glass and inner layer from being exposed to the elements.

**Tested to Meet ANSI/FM2510 Standards for Water Loading**



4x8' Sections Holding 4' of Water



Filling Custom-Built Test Rig



**Tested**

Water + Debris  
Impact

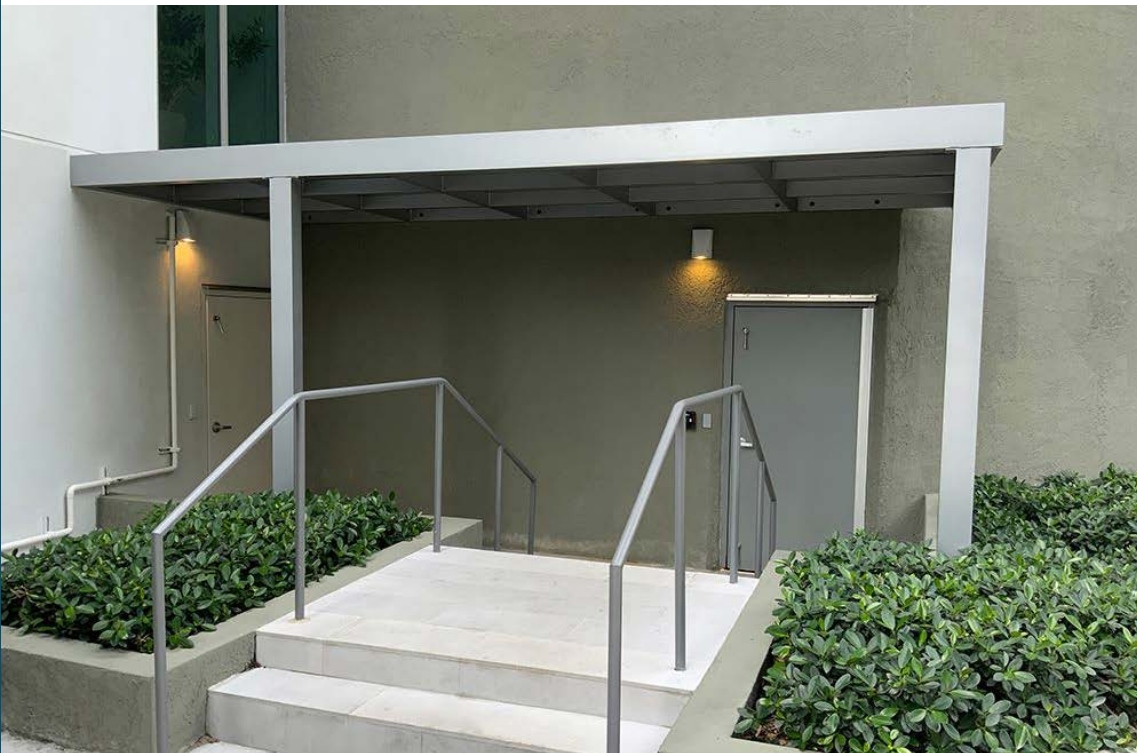
# Commercial Flood Doors



MULTIPLE OPTIONS

**A pedestrian door that operates as a flood barrier when activated & is perfect for critical infrastructure.**

The Commercial Flood Door is internally reinforced and has a mechanical sealing mechanism housed within the frame, giving a tight seal when properly closed. This pedestrian flood door is an active flood barrier when engaged, and are ideal for critical infrastructure locations such as mechanical and electrical rooms.



## Applications

Egress Doors | Mechanical & Electrical Rooms | Critical Infrastructure

**FEATURES**  
MADE IN THE USA



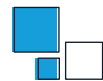
**Dual-Function**

Operates As A Standard Door



**Color Options**

Powder Coat  
Paint Available



**Customizable**

Glass Port, Panic Bars,  
& Special Locks

**Meets ADA Requirements**

The flood door can be manufactured in either aluminum or steel, depending on your needs. Because it looks and operates like any other door, the aesthetic impact is minimal. Choose from many customization options for your door, including standard panic bars, specialized locking hardware, small glass view ports, and more.



**Tested**

Meets IBC, ASCE,  
and FEMA criteria



**Glass Port, Panic  
Bars, & Special  
Locks Available**

**Door Dog Removable  
Sealing Latch**

Before a flood, each door can be activated in seconds by engaging door dogs on the top and bottom. This creates a tight seal, quickly initiating floodproofing capabilities.



**Finish Options**

Choose Steel Or  
Stainless Steel

# Commercial Flood Gates

FLOOD PANEL



**A permanently installed gate that operates as a flood barrier when closed & is designed for rapid deployment.**

Hinged Flood Gates are permanently installed at the opening location and kept open until needed. Once swung shut and locked, an effective seal is created. This barrier option offers a quick reaction time, a critical advantage in the face of a threatening flood event.



## Applications

Buildings & Garages | Levee & Waterfronts | Critical Infrastructure | Flood Walls



The system can be custom designed for almost any width and can be fabricated with a single or double leaf configuration. For larger gates, central support wheels can be fitted for safety and ease of deployment. To reduce the aesthetic impact of this barrier, the front surface can be painted or covered in a manner to match the building façade.



**FEATURES**  
MADE IN THE USA



**Engineered**

Single or double leaf at any size



**Point of Use**

Operates Normally  
As A Gate



**Easily Deployed**

Close and lock with  
one person



**Customizable**

Paint available to  
match facade



**Durable**

Long Service Life With  
Minimal Maintenance

# Industrial Flood Gates & Doors



WALZ & KRENZER

**Heavily-engineered, industrial-level doors, and gates design for the most complex applications.**

From the simplest flood barrier to the most complex high pressure closure, our engineers design your product based on your requirements. Whether you need advanced FEA analysis or 3-D modeling, you can count on a fully engineered, tested product that can fully meet almost any specifications.



*Flood Gates Protecting NYC Queens Midtown & Hugh L. Carey Tunnels From Flooding*



*South Ferry Terminal, NYC Inflatable Gasket Door*

## Watertight Doors

Custom watertight doors can be supplied with power operation and most can be specially designed for blast, ballistic, shock, vibration, seismic, chemical, tornado, and high pressure requirements. Single & double panel doors are available.



**SLIDING**  
*Compact*

Horizontal or Vertical



**INFLATABLE GASKET**  
*Flush, High Pressure*

Button-activated inflation



**COMPRESSION GASKET**  
*Raised, High Pressure*

Quick Acting or Individually Dogged

## FEATURES MADE IN THE USA



### Customizable

Engineered To Fit Any Size & Application



### User Control

Manual, Full Automation, or Powered

## Utilized in Projects For the US Army Corps of Engineers, US Navy, and State Transit Departments



### Tested

Meets FEMA, USACE, FM/ANSI 2510 Requirements



### Material Options

Aluminum, Mild A36 Steel or 304 & 316 Stainless Steel

## Hinged, Sliding, or Removable Flood Gates

Whether requirements call for permanent, removable, or automatically deploying flood barriers, these custom designed closures provide reliable protection. Closures can be designed to meet FEMA, FM/ANSI 2510, USACE requirements. Project portfolio varies from Museums, government projects, NASA to Nuclear Plants.



**SIDE-HINGED**  
*Permanent & Ready*

Lipseal, Inflatable or Compression Gasket



**SLIDING**  
*Permanent & Compact*

Horizontal or Vertical



**REMOVABLE**  
*Can Be Stored*

Lipseal, Inflatable or Compression Gasket



### Finish Options

Various Paints, No 4 Polish, Or Mill Finish

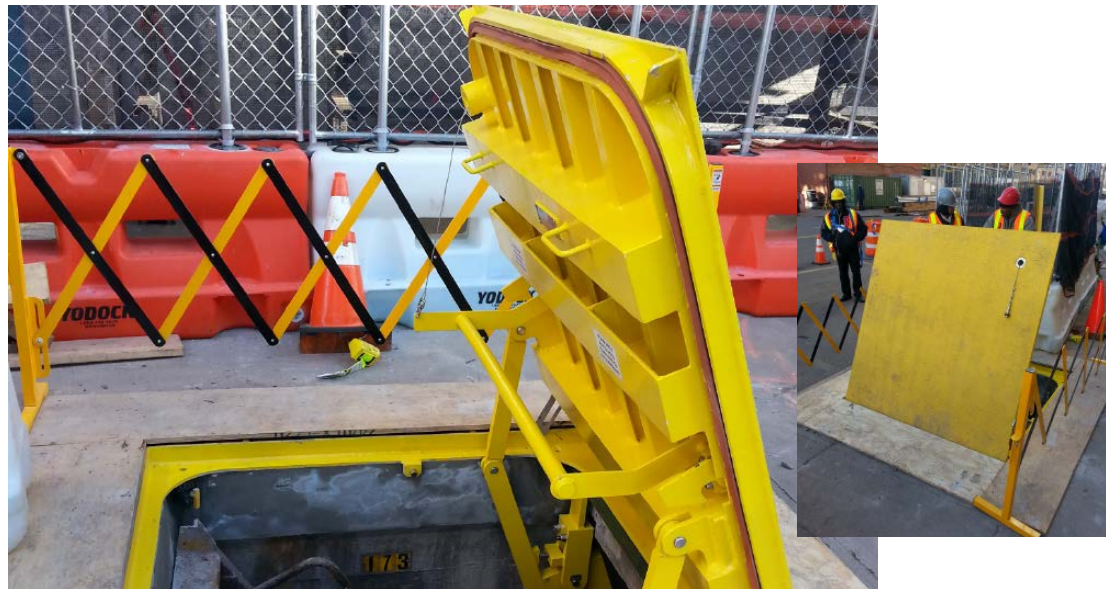
# Watertight Hatches

WALZ & KRENZER



**An industrial watertight hatch, custom-engineered for flood protection, featuring manual or powered operation options.**

Custom hatches can fit any size and pressure requirement. Additional load factors such as wheel loads and point loads from material handling equipment can also be incorporated. Flush and raised configurations are available and are operable from one or both sides.

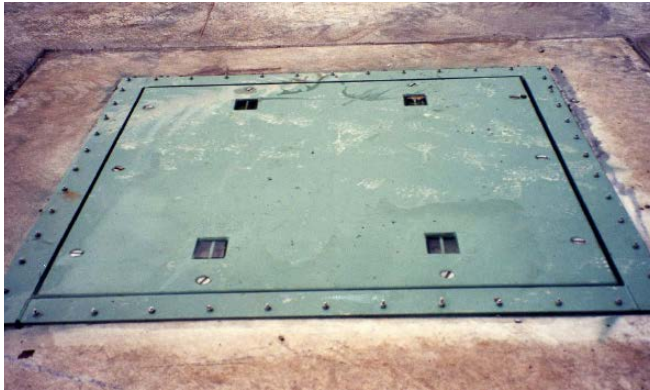


## Applications

Subfloor Access | Mechanical Areas | Water Treatment Facilities | Pumping Stations

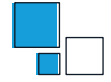


**FEATURES**  
MADE IN THE USA



**Any Size, Configuration, or Design Pressure**

Hatches are sealed utilizing individual dogs, quick-acting handwheels, or drop bolts. Larger hatches may require mechanical opening assistance like gas springs, coil springs, and counter-weights, although power operation is also an option.



**Custom Mounting**

Flush or Raised Options



**Versatile**

Multiple Sealing Options Available



**Engineered**

No Size or Load Factor Limits



**Material Options**

Aluminum and Various Steel Finishes



**Activation**

Power Operation Available

**Material Specifications**

<b>PANEL &amp; FRAME</b>	Mild steel, stainless steel, aluminum, various high-strength steels
<b>GASKET MATERIAL</b>	Neoprene, Viton, EPDM, silicone, Nitrile, and others
<b>MECHANISM</b>	Above via T-wrench, below via dogs, quick-acting handwheel or panic bar.

# Roller Curtain Flood Door

WALZ & KRENZER



**An automatic roller curtain door that is activated by oncoming water and secures the opening**

The AutoSeal Watertight Roller Curtain Door is the latest technology in flood protection. During normal non-flooding operation, it functions as an everyday curtain door. Once water is sensed by the controls at a pre-determined level, it automatically deploys and secures the opening. Additionally, it can also be easily operated with the push of a button on the side or with a remote control.



**WIDTH**

23' max

**HEIGHT**

25' max

**DESIGN PRESSURE**

1' below top of opening

**Applications**

Warehouses | Entrance Doors | Storefronts | Garage Doors | Parking Lots

**FEATURES**  
MADE IN TAIWAN



**Functional**

Operates for every day use



**Safety Features**

Infrared sensor detects movement



**Versatile**

Multiple mounting options possible



**Passive System**

Automatically closes upon detecting water



**Activation**

Motorized by button or remote control



**The First Automatic Watertight Roller Curtain Door in the US**

Like most standard garage doors, it has an infrared start/stop sensor to avoid closing when an object is in the way. A battery back-up is included for operation during power outages.



The door is constructed from aluminum roller curtain door slates with a stainless steel frame and a flush bottom sill. For installation, there are multiple mounting options, like inside the face of the building, outside the face of the building or inside the jambs.

**Material Specifications**

<b>PANEL</b>	Custom extruded aluminum shape
<b>FRAME</b>	Stainless steel
<b>CHASSIS</b>	ASTM A-36 steel
<b>GASKET</b>	EPDM foam
<b>FINISH</b>	Extruded aluminum mill finish



# Modular Perimeter Flood Barrier

GEODESIGN BARRIERS



**A high-strength, modular barrier system designed to accommodate various obstacles and terrains.**

With reinforced high strength steel trusses, diamond plated aluminum panels or sheets, and a waterproof liner, the Geodesign flood barrier is incredibly durable, withstanding debris impact and flooding. This engineered flood barrier provides full height protection that allows for modular setup, compact storage, and quick deployment.



## Applications

Flood Protection | Critical Facilities | Cofferdams | Energy Substations | Containment



With over 500,000 linear feet in 24 different countries protected, this FM approved barrier is a reliable, proven solution. Barriers can be set up on any terrain by one person without the use of any tools or machines. Equipped with collapsible supports, this system is delivered in stackable steel crates, facilitating ideal storage and transportation.



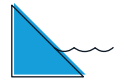
Storage options for each barrier component.

**FEATURES**  
MADE IN SWEDEN



**Easy to Deploy**

Modular with no fill material



**Adaptable**

Design conforms to all surfaces



**Robust Material**

High strength steel and corrosion resistant aluminum

**Heavy Duty**



PROTECTION HEIGHT	SECTION WIDTH	BARRIER FOOTPRINT	FOOTPRINT & MAX LINER
48 in	4'	5' 11"	14'
60 in	4'	7' 3"	14'
72 in	4'	8' 10"	22'
84 in	4'	10' 2"	22'
96 in	4'	10' 2"	30'



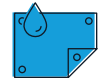
**Easily Store + Transport**

Collapsible components with stackable crates

**Industrial**



PROTECTION HEIGHT	SECTION WIDTH	BARRIER FOOTPRINT	FOOTPRINT & MAX LINER
24 in	32"	1' 10"	6'
32 in	39"	2' 11"	10'
40 in	39"	3' 9"	10'
48 in	39"	4' 9"	13'



**Liner Options**

High and Low Density Polyethylene



Scientific research & testing ensures products conform to highest standards of safety & property loss prevention.

# Water-Filled Interlocking Barrier



MUSCLE WALL®



A rapidly-deployed, portable flood barrier engineered to withstand rushing or standing water.



Muscle Wall can replace thousands of sandbags all while being quick, easy, reusable, reliable, & customizable. It is engineered to withstand the immense force of rushing or standing water due to its patented toe design.



*Extended Run of Muscle Wall*

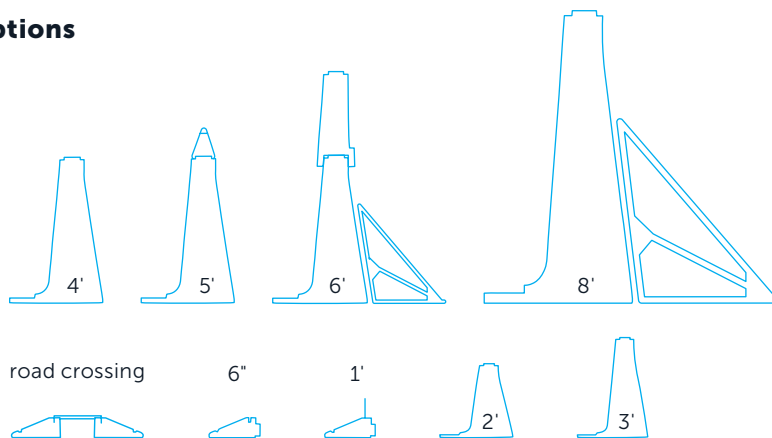


Muscle Wall Protecting Battery Park in New York City

## STRONGER THAN STRONG

Water pressure forces the toe downward anchoring the wall to the ground while containing & diverting water. Unlike sandbags, it is rapidly deployed, portable, & easily disassembled. Once sections & liner are in place, fill with water.

### Sizing Options



Muscle Wall Protecting Battery Park in New York City (Using Wrap Liner Option)

## Applications

Flood Control | Containment | Stormwater Management | Road Crossings

## FEATURES MADE IN THE USA



### Standard Sizes

Ready to Ship & Deploys With Ease



### Interlocking

Tongue & Groove  
Allows 15° Max Bend



### Flexibility

Corner Provides  
90° Turns



### Stackable

Easily Stacked  
for Storage



### Liner Options

Versatile Wraps For  
Multiple Surfaces



Scientific research & testing  
ensures products conform to  
highest standards of safety &  
property loss prevention.

# Water-Filled Tube Barrier

TIGER DAM™



**A long, flexible tube that can quickly be joined end-to-end, stacked to various heights & filled with water.**

This system forms a barrier to protect buildings, properties and any other structures prior to a flood. Each tube can be filled in minutes with a 2-inch pump, a fire hydrant or a garden hose. The tubes are capable of being stacked up to a maximum of 32 feet high and linked together seamlessly for miles. They can be virtually any length and take any shape.



## Applications

Flood Protection | Critical Facilities | Commercial & Residential | Road & River Crossings | Containment



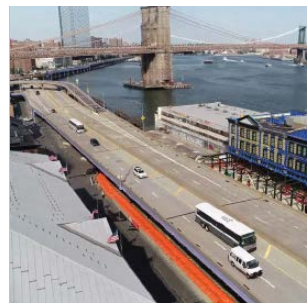
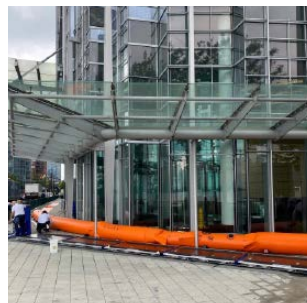
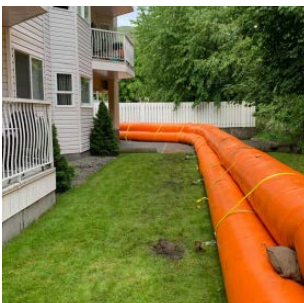


The dams are filled individually and secured with straps and anchors if needed. After the flood waters have receded and the dam is no longer required, the system can be drained, cleaned and packaged for storage. The Tiger Dam™ flood protection system has been thoroughly tested at The University of British Columbia, and is Platinum Certified by the U.S. Army Corp. of Engineers, the Association of State Floodplain Managers, and FM Approvals.



STANDARD HEIGHTS	LENGTH	MATERIAL
18", 24", 30", 36" & 42" H	50' Sections	Heavy duty double-coated nylon/PVC

## CONNECT UNLIMITED SECTIONS TOGETHER



## FEATURES MADE IN THE USA



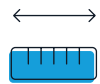
### Deploy Quickly

Rapid deployment when filled using fire hydrant



### Flexible

Can be turned at any angle to fit any shape



### Connectable

Can be connected to fit any length



### Stackable

Buildable System. Engineered to 32 ft



### Efficient

Reusable & Cost Effective



Scientific research & testing ensures products conform to highest standards of safety & property loss prevention.

# Semi-Filled Interlocking Barrier



FLOODSTOP

A long-run flood barrier with corner & wall connections & alternating, self-filling pods that speed up deployment.



The FloodStop Barrier is a unique, rapidly deploying flood barrier system. Pods are easily connected together using interlocking keys, ultimately creating a flexible barrier of any length. When assembled, some pods are pre-filled with the remainder filling with floodwater as levels rise.



## Applications

Flood Control | Stormwater Management | Road Crossings | Containment



This system can be easily assembled by a single person. Before a flood, simply place all pods in the desired position, insert the connection keys, and fill one out of every third unit with water. Some configurations require every other unit to be pre-filled. The remaining empty pods will fill and drain as floodwaters come and recede. After a flood event, pods can be disconnected and stored for later use, unlike sandbags.

### Each System Uses a Combination of Self-Fill & Pre-Fill Units



**25"**

**48"L x 25.5"H x 25.5"D**

Built in Connector Key with reduced deployment time

**PROTECTION UP TO 20"**



**36"**

**40"L x 36"H x 30"D**

Taller model with separate Connector Key

**PROTECTION UP TO 25"**



### FEATURES MADE IN THE USA



#### Standard Sizes

Ready To Go & Deploy With Ease



#### Stable

Self-balancing. No Bolting Required.



#### Semi Self-Filling

Alternating Barriers Fill & Empty Themselves



#### Linerless

Barriers Have Gaskets & Don't Require A Liner



#### Versatile

Allows For Bends, Corners, & Wall Connections

### Wall Connections & Cornering

Barrier to Barrier and Wall Options Available





# Long Sand-Filled Flood Barrier

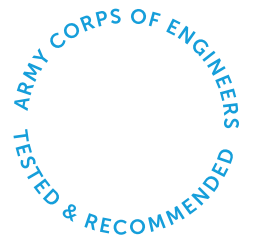


PERMASHIELD™

**A trapezoidal, multi-cell barrier system, designed for long-run applications that can be stacked to any height.**

When filled with sand, Permashield's patented trapezoid shape redirects lateral water pressure downward, holding back floodwaters and resisting rolling and sliding. Can be easily stacked to almost any height and sections can be strapped together with a 3000lb tensile strength nylon strap to build one continuous flood wall.

Permashield has been rigorously tested by the USACE and is a proven stand-alone flood fighting barrier. The heavy duty, woven polypropylene coated fabric is highly resistant to damage from debris impacts and is resistant to contamination and seepage into the bag contents. If damage occurs, the design isolates damage to the impacted cell.



### Applications

Flood Protection | Cofferd Dam | Levee Strengthening | Dune Stabilization



4' High Waterfront Protection, Peoria, IL



Duke Energy, 8' Protection Height

## Mounting Hangers & Installation Sled with Hopper Speed Up Deployment



Permashield cells are loaded into sled using mounting hangers and expand out to open as the cells are filled using attached hopper.

## FEATURES MADE IN THE USA



### Trapezoidal

Shape Engineered to Hold Back Water

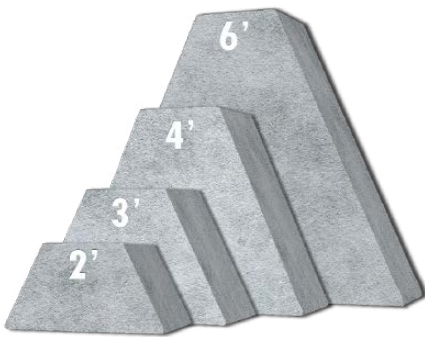


### Stable

Doesn't Move Under High Pressure

## Sizing Options

SOLD IN 50' LONG SECTIONS



### Stackable

Bags Layered To Reach Any Height



### Custom Length

Can Be Connected For Long Runs

### HEIGHTS

2', 3', 4', 6' Stack to Any Height

### LENGTH

Connectable 50' Runs

### MATERIAL

Woven Polypropylene-Coated Fabric



### Impermeable

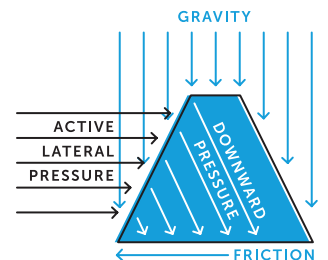
Watertight From Seepage & Contamination



Roadside Levee Strengthening, KY



Harlow's Casino, MS. 7.5' of water for 31 days.



# Short Sand-Filled Flood Barrier

VERSASHIELD™



**A fillable, multi-cell barrier system, designed for short-run applications that can be stacked to any height.**

This rapidly deployed and cost-effective sandbag alternative can be filled, used, cleaned out and then reused again to continue to protect homes and business from flood water. The trapezoidal shape resists sliding and rotational forces, using gravity and system weight to self-stabilize. The standard-sized systems can be stacked and connected for additional coverage and a variety of applications.





Connected 2' x 4' VersaShield Filled With Sand



Strap & D-Rings to connect VersaShield

HEIGHT	LENGTH	WIDTH	FILLED WEIGHT
1'	3'	27"	500 lbs
2'	4'	36"	2,800 lbs



## Applications

Flood Protection | Coffer Dam | Sentiment Capture | Secondary Containment



## FEATURES MADE IN THE USA



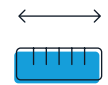
### Stable

Doesn't Move Under High Pressure



### Stackable

Bags Layered To Reach Any Height



### Custom Length

Can Be Connected For Long Runs



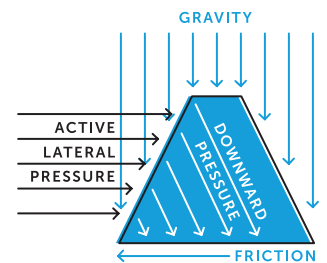
### Impermeable

Watertight From Seepage & Contamination



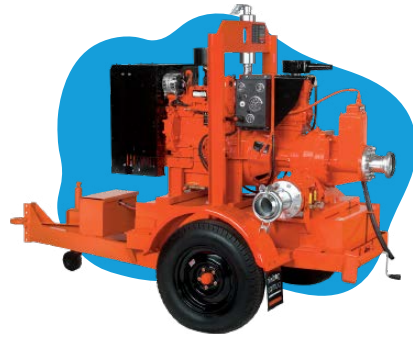
### Transportable

Integrated Handles to Easily Relocate



# Flood Pumps

GODWIN



Dry floodproofing designs require heavy duty pumps that remove water to prevent it from reaching critical spaces.

FM APPROVED

## FP Dri-Prime



**FP Dri-Prime**  
FP100, FP150, FP225, FP300

The Godwin FP Dri-Prime Series pump is specifically designed to prevent flood water from reaching critical building systems & interior spaces. It's tough, smart, and versatile, making it one of the most effective flood mitigation tools.



**FM Approved**  
Rigorously tested through simulation & component.



**Flow Range**  
500 GPM to over 5000 GPM



**Diesel**  
Diesel drive options



**Many Sizes**  
Multiple Suction Branch Sizes (4"-12")



**Convenient**  
Run Dry Capability



**Sound Levels**  
Open set or sound attenuated enclosure



**Remote Operation**  
Option to control from any device

### Applications

Flooding | Construction | Industrial Dewatering | Basements



ELECTRIC

## Submersible



### Submersible Pumps

GSP05 1/2hp | GSP10 1hp

Compact & portable with a lightweight yet durable design equipped with dry-running capabilities.



### Submersible Trash Pumps

GST05 1/2hp | GST10 1hp

Compact & portable with a lightweight yet durable design equipped with dry-running capabilities. Able to pass solids up to 1 inch.

GASOLINE DRIVEN

## Wet-Prime



### Dewatering Pumps

2" GWP-50HX | 3" GWP-80HX | 4" GWP-100HX

Durable design for reduced wear and maintenance. Semi-trash handling capability.



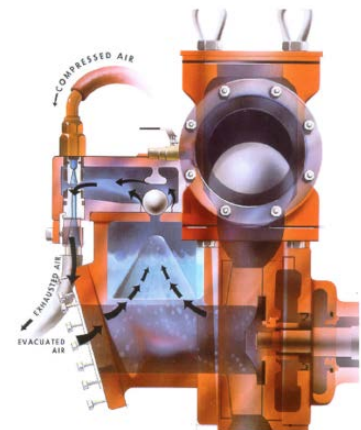
### Trash Pumps

2" GTP-50HX | 3" GTP-80HX | 4" GTP-100HX

Designed to handle solids. Durable design for reduced wear and easy maintenance for fast debris removal.

## Technical Specifications

MODEL	HP	MAX FLOW	MAX SOLID	RPM	VOLTAGE
GST05	0.5 kw	0.5 gpm	1"	3600	115, 230
GST10	1.0 kw	1.0 gpm	1"	3600	115, 230
GTP - 50HX	5.5 kw	185 gpm	1"	N/A	x
GTP - 80HX	8.0 kw	354 gpm	1.5"	N/A	x



## Applications

Flooding | Construction | Trash-Laden Water | Septic Tanks | Manholes

# Engineered Flood Vents

SMART VENT PRODUCTS, INC.



Flood vents protect enclosures by allowing automatic bi-directional water flow that equalizes hydrostatic pressure.



*Insulated 1540-520 in Stainless Steel*



*Dual-Function Stacker 1540-511 in Powder Coat White*



*Insulated Wood Wall 1540-570 in Stainless Steel*

## Dual-Function

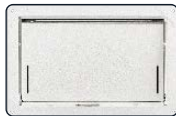
STEEL GRAY WHITE BLACK WHEAT CUSTOM



### Standard Dual-Function

1540-510 & 1540-511

Automatic ventilation. A bi-metal coil opens & closes the louver as the temperature changes. Stacker models are ideal for large square footages with less openings.



### Garage Door Model

1540-524 & 1540-574

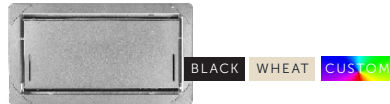
Designed for garage doors or heavily trafficked entry doors. Available in insulated or dual-function models.

### Applications

Crawlspaces | Full Height Enclosures | Parking Garages | Storage Facilities | Foyers

## Insulated

STEEL GRAY WHITE



### Standard Insulated

1540-520 & 1540-521

Ideal for areas requiring venting protection and air ventilation. Stacker models ideal for large square footages with less openings.



### Insulated Wood Wall

1540-570

Designed to fit between studs spaced 16" on center. Pre-drilled slots in the four corners of the vent flange make for easy installation.

## FEATURES MADE IN THE USA



### Stainless Steel

316L Marine Grade



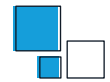
### Bi-Directional

Water & Debris Flow In And Out



### Secure

Internal Floats Keep Door Latched



### Custom Sizes

Dimensions to Fit Your Needs



### Support

In-House Engineering & Design Assistance



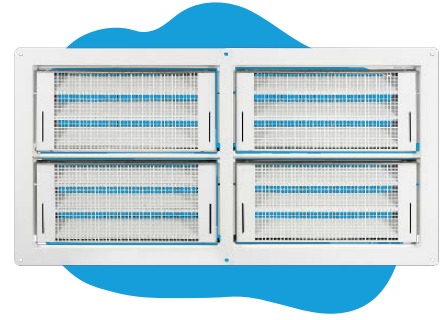
Certified Flood Protection

MODEL	FLOOD COVERAGE	AIR VENTILATION	DIMENSIONS	ROUGH OPENING
1540-510	200 sq ft	51 sq in	16"W x 8"H x 3"D	16 <sup>1</sup> / <sub>4</sub> " x 8 <sup>1</sup> / <sub>4</sub> "
1540-511	400 sq ft	102 sq in	16"W x 16"H x 3"D	16 <sup>1</sup> / <sub>4</sub> " x 16 <sup>3</sup> / <sub>8</sub> "

MODEL	FLOOD COVERAGE	R-VALUE	DIMENSIONS	ROUGH OPENING
1540-520	200 sq ft	8.34	16"W x 8"H x 3"D	16 <sup>1</sup> / <sub>4</sub> " x 8 <sup>1</sup> / <sub>4</sub> "
1540-521	400 sq ft	8.34	16"W x 16"H x 3"D	16 <sup>1</sup> / <sub>4</sub> " x 16 <sup>3</sup> / <sub>8</sub> "
1540-570	200 sq ft	8.34	14.5"W x 8.5"H x 3"D	14 <sup>1</sup> / <sub>2</sub> " x 8 <sup>3</sup> / <sub>4</sub> "
1540-524	200 sq ft	8.34	16"W x 8"H x 3"D	16 <sup>1</sup> / <sub>4</sub> " x 8 <sup>1</sup> / <sub>4</sub> "
1540-574	200 sq ft	8.34	14.5"W x 8.5"H x 3"D	14 <sup>1</sup> / <sub>2</sub> " x 8 <sup>3</sup> / <sub>4</sub> "

# Smart Vent Multi-Frames

SMART VENT PRODUCTS, INC.



Customizable one-piece frame with fewer openings for commercial applications or large square footages.



6 x 2 Insulated #1540-150602 Custom Gray

**1 Flood Door** STEEL GRAY WHITE BLACK WHEAT CUSTOM

Dual Function 1540-0039    Insulated 1540-0239



Custom Configurations Up To A 6 x 3 Multi-frame

**2 Frame**

Standard Multi-frame

1/8 inch thick angle iron for an extremely sturdy, element-resistant design.

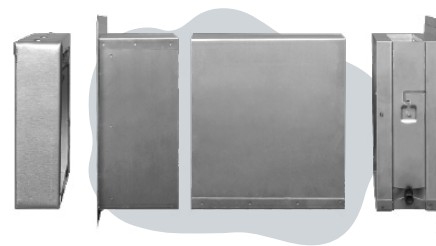
"E" Multi-frame

The same superior design using a lighter steel material to provide a more economical solution.

**3 Configuration**

MODEL	DESIGN	COVERAGE	"E"				
1540-150102	1W x 2H	400 sq ft	✓	1540-150401	4W x 1H	800 sq ft	x
1540-150103	1W x 3H	600 sq ft	✓	1540-150402	4W x 2H	1600 sq ft	x
1540-150201	2W x 1H	400 sq ft	✓	1540-150403	4W x 3H	2400 sq ft	x
1540-150202	2W x 2H	800 sq ft	✓	1540-150501	5W x 1H	1000 sq ft	x
1540-150203	2W x 3H	1200 sq ft	✓	1540-150502	5W x 2H	2000 sq ft	x
1540-150301	3W x 1H	600 sq ft	✓	1540-150503	5W x 3H	3000 sq ft	x
1540-150302	3W x 2H	1200 sq ft	✓	1540-150601	6W x 1H	1200 sq ft	x
1540-150303	3W x 3H	1800 sq ft	✓	1540-150602	6W x 2H	2400 sq ft	x
				1540-150603	6W x 3H	3600 sq ft	x

# Smart Vent Accessories



SMART VENT PRODUCTS, INC.

Accessories & products that pair with Smart Vents to upgrade your energy efficiency, finish a look, meet codes or for installation.



## Sealing Kit

Energy Saving



Finishes off interior spaces & lowers energy bills, effectively meeting 2018 Energy Codes.

**SINGLE** 1540-526

**STACKER** 1540-526-2



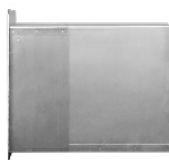
## Hurribond™

2-in-1 Adhesive

A fast curing, multi-purpose, waterproof sealant & adhesive used for installing Smart Vents.

**WHITE** HB-3100

**GRAY** HB-3200



## Trim & Sleeve Kit

Standard & Wood Wall

Provides a clean, finished look on interior walls. Adjustable.

**7" - 12.5"** 1540-531-12

**10" - 15.5"** 1540-531-15

STANDARD

**4" wall depth** 1540-573

**9" wall depth** 1540-573-9

WOOD WALL



## Fire Damper

Standard & Wood Wall

UL Certified. For use in fire-rated walls. 2 or 3-hr options available.

**STANDARD** 1540-530

**WOOD WALL** 1540-537

# Get In Touch

